

2025 Japan Trip by Yamauchi Japan Initiative

The Yamauchi Family, renowned as the founding visionaries behind Nintendo, is proud to announce the launch of the Yamauchi Japan Initiative. As our inaugural undertaking, we are extending an exclusive invitation to 20 affiliates at universities located in the greater Boston area to join us in Japan in May 2025.

We are committed to ensuring that this experience is accessible to all, and as such, all expenses, including transportation and lodging, will be fully covered.

MISSION



Kiyomizu-dera Temple (UNESCO World Heritage)

Sushi, Ramen, Manga... These are the cultural touchstones that often come to mind when one thinks of Japan. However, Japan's rich cultural heritage extends far beyond these contemporary icons, spanning more than 2,500 years. At its core lies a concept we can aptly describe as 'sustainability,' an unwavering commitment to pursuing mutual and enduring prosperity in harmony with both fellow humans and the natural world, rather than chasing individual short-term gains. Remarkably, this commitment predates the global sustainability trend, with over 30,000 Japanese enterprises having thrived for more than a century without formal recognition of 'sustainability.'

Beneath the surface of this sustainability lies a profound Japanese philosophy, one that has persistently sought to bridge dichotomies between self and others, subject and object, body and mind, and human and nature.

We are thrilled to extend an invitation to 20 esteemed students to join us on the Japan Trip 2025.

We believe that this experience will provide you with profound insights and inspiration, enabling you to reexamine pressing global issues such as environmental challenges, economic inequality, mental health, and more. Our hope is that you will draw from the deep well of Japanese non-dualistic philosophy, interwoven into our traditional culture, landscapes, businesses, and the everyday lives of our people.

Kyoto and Boston are sister cities, and we believe that inviting affiliates in Boston to Kyoto will also lead to mutual understanding of our respective cultures.

We eagerly anticipate your arrival into our Yamauchi Family's community as cherished members, as together we embark on a journey towards mutual and enduring prosperity, all in the spirit of making our world a better place.

Banjo Yamauchi The fifth generation of the founding family of Nintendo



It is my great pleasure to launch the Yamauchi Japan Initiative. The Yamauchi family founded Nintendo in 1889 as a small hanafuda (Japanese playing card) company. Over the decades, Nintendo has flourished under the stewardship of three generations. My grandfather, Hiroshi Yamauchi, orchestrated Nintendo's transformation from a local enterprise into a global video game powerhouse. While our family no longer holds a direct role in Nintendo's management, we remain faithful to the core principles that have guided Nintendo's inception and growth. Today, we are committed to pioneering fresh innovations for the world.

The relentless march of technology has undoubtedly enhanced our lives, yet it has also underscored the necessity of not relying solely on technological advancement to enhance global well-being. It is imperative that we rekindle our focus on the humanities and concurrently ensure the safety of technological innovations.

I firmly believe that Nintendo is more than just a game developer; it is a company perpetually in pursuit of novel avenues for entertainment and engagement. Similarly, as the Yamauchi family, our aspiration is not to dictate the rules for the global community but rather to embrace the role of explorers, tirelessly seeking ideas that can rejuvenate the foundations of our society.

Banjo Yamauchi

RECOMMENDATIONS

Rev. Seigen Mori, Ph.D.

Director General, Kita Hosso School of Buddhism
Director of Educational Affairs, Kiyomizu-dera Temple (UNESCO World Heritage)

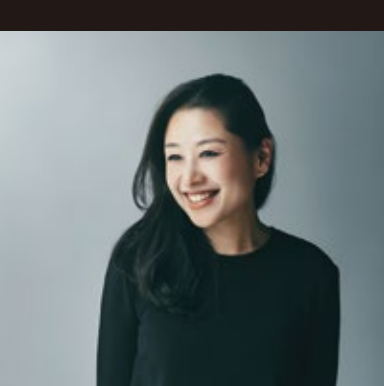


Photo by HIRO KIMURA

Kiyomizu temple, a Buddhist temple founded in 778, was designated as UNESCO's World Heritage in 1994. Just as its name represents, our temple has enshrined the water (*mizu* 水) flourishing since its foundation over 1,200 years ago. Water (*mizu* 水) is the origin of everything including life beyond borders, races, and any other things, and we Buddhists here find Buddha. Our history has embodied Japanese religions and traditional cultures including architecture, food, and so on; however, those were born and cultivated not only in Kyoto but also all over Japan. In other words, there are countless spots with this beauty all around Japan. We would like you to visit Japan and enjoy our traditional culture, exerting your five senses.

Taeko Hosoo

Director, HOSOO co.,Ltd



For over 1200 years, Nishijin-ori has been pursuing beauty in Kyoto. Its history has also been a series of innovations. Continuing to create overwhelming beauty that touches people's hearts while evolving with each era. That is the power of Japan's long-standing traditional craftsmanship, and I strongly believe it will be a hint for the future to come.

PROGRAM DETAILS 5/4-5/11, Unforgettable Experience in Japan

*This schedule is subject to change. We will let you know when it is confirmed.

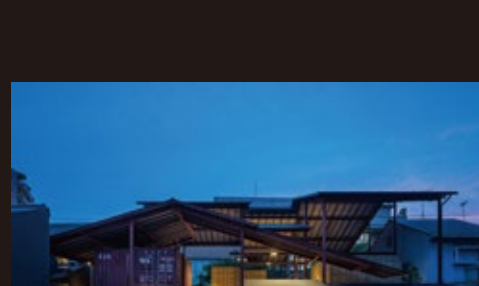
DESTINATIONS

Tokyo: The world's pioneering city

- Courtesy visit to the Japanese Government (Prime Minister and/or Minister(s))
- Visit to the headquarters of top global companies

Kyoto: The world's historic city

- Kiyomizu-dera Temple (1300 years of history, UNESCO World Heritage Site)
- Sake brewery (350 years of history)
- Traditional and innovative textiles workshop (335 years of history)
- SOHA (Creative Collective starting in 2021)



APPLICATION

- This Japan Trip is on a selective basis. Submission of a brief essay and resume will be required.
- Those who are accepted into the trip will be asked to participate in a two-hours long pre-study session approximately once every two month (refreshments will be provided).



- The program will only cover the expenses of the students themselves, and only they will be allowed to participate in the program at the moment.
- All program participants are required to attend all activities. Partial participation is only allowed for reasons related to family or religious matters.
- This program is sponsored by the Yamauchi Foundation, a public interest incorporated foundation in Japan, and organized by the Yamauchi Japan Initiative. The Yamauchi Foundation and the Yamauchi Japan Initiative do not engage in any form of recruitment or coercion related to specific religious or political beliefs through this program.
- This program is organized and operated by the Yamauchi Japan Initiative and is not affiliated with other organizations.

TEAM

Banjo Yamauchi <https://y-n10.com/>

Family Representative, Yamauchi-No.10 Family Office; Managing Director, Yamauchi Foundation

Masaki Nomura <https://sites.harvard.edu/masaki-nomura/>

Executive Advisor, Yamauchi-No.10 Family Office; Executive Advisor / Chief Strategist, Kyoto Institute of Philosophy; MPA '24, Harvard Kennedy School

Noboru Takemoto <https://y-n10.com/>

Director, Yamauchi-No.10 Family Office

Kei Shitomi <https://www.linkedin.com/in/keisuke-shitomi-7a74bb3/>

MPA Candidate '25, Harvard Kennedy School

Tomoki Matsuno <https://www.tomoki-matsuno.com/>

Harvard College '25; Founding President, Harvard Undergraduate Japan Policy Network